



# Lakeshore Plaza

1501-1597 Sloat Blvd | San Francisco, California

## NOW LEASING

SPACE #	SF	RENT	NNN
1581	2,618	Call	\$12.00
1503	6,120	Call	\$12.00

For information, contact:

**Courtney Jones**, CA DRE #01232209  
[cjones@crosspointrealty.com](mailto:cjones@crosspointrealty.com)

**Carter Hemming**, CA DRE #01123464  
[chemming@crosspointrealty.com](mailto:chemming@crosspointrealty.com)

Phone: 415.288.6888

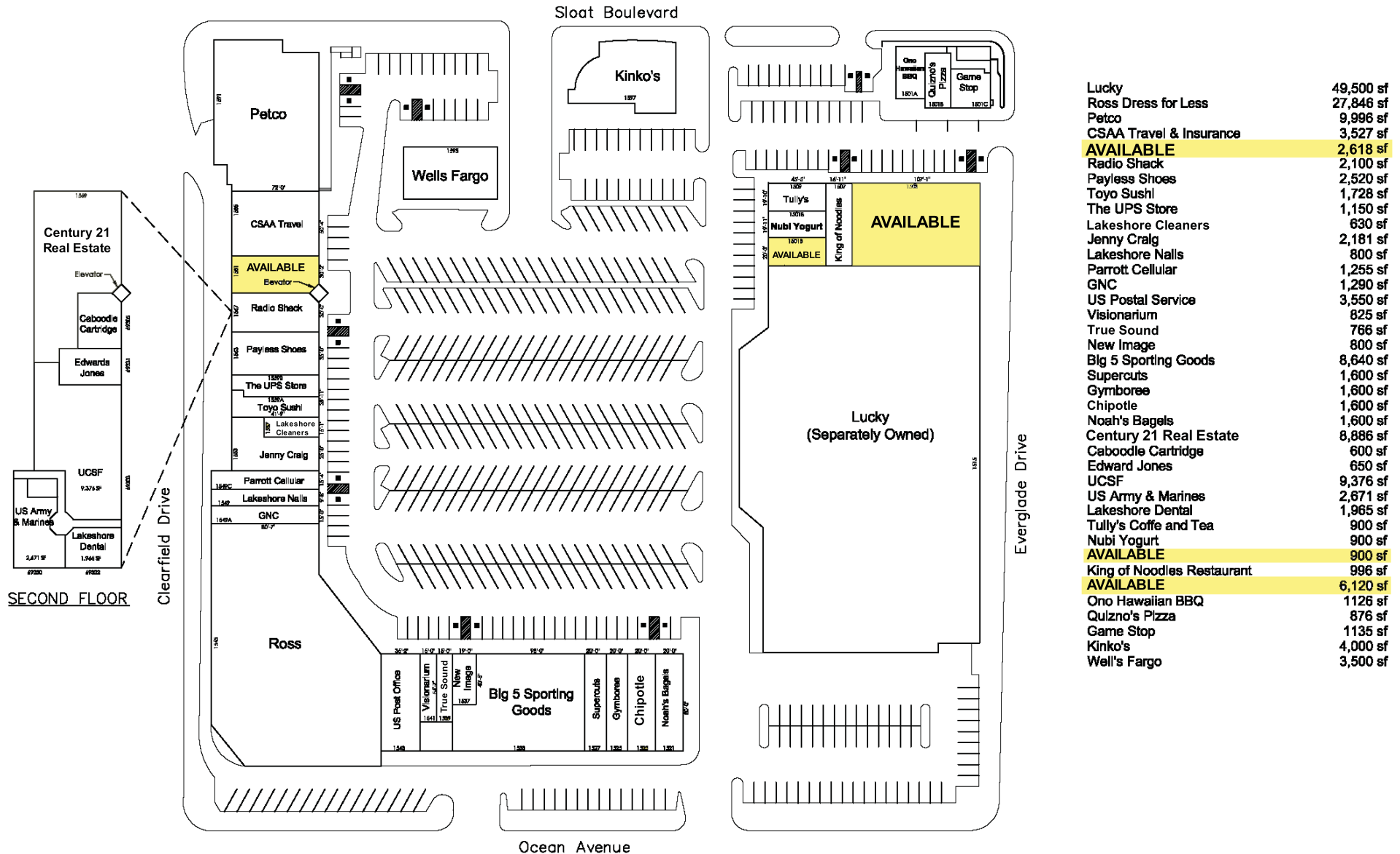
Fax: 415.288.6877

Crosspoint Realty Services, Inc.  
260 California Street, 4th Floor  
San Francisco, CA 94111  
[www.crosspointrealty.com](http://www.crosspointrealty.com)



### SITE PLAN

Contact: Courtney Jones (CA DRE #01232209), cjones@crosspointrealty.com Carter Hemming (CA DRE #01123464), chemming@crosspointrealty.com



Lucky	49,500 sf
Ross Dress for Less	27,846 sf
Petco	9,996 sf
CSAA Travel & Insurance	3,527 sf
<b>AVAILABLE</b>	<b>2,618 sf</b>
Radio Shack	2,100 sf
Payless Shoes	2,520 sf
Toyo Sushi	1,728 sf
The UPS Store	1,150 sf
Lakeshore Cleaners	630 sf
Jenny Craig	2,181 sf
Lakeshore Nails	800 sf
Parrott Cellular	1,255 sf
GNC	1,290 sf
US Postal Service	3,550 sf
Visionarium	825 sf
True Sound	766 sf
New Image	800 sf
Big 5 Sporting Goods	8,640 sf
Supercuts	1,600 sf
Gymboree	1,600 sf
Chipotle	1,600 sf
Noah's Bagels	1,600 sf
Century 21 Real Estate	8,886 sf
Caboodle Cartridge	600 sf
Edward Jones	650 sf
UCSF	9,376 sf
US Army & Marines	2,671 sf
Lakeshore Dental	1,965 sf
Tully's Coffe and Tea	900 sf
Nubi Yogurt	900 sf
<b>AVAILABLE</b>	<b>900 sf</b>
King of Noodles Restaurant	996 sf
<b>AVAILABLE</b>	<b>6,120 sf</b>
Ono Hawaiian BBQ	1126 sf
Quizno's Pizza	876 sf
Game Stop	1135 sf
Kinko's	4,000 sf
Well's Fargo	3,500 sf

## MARKET AREA

### Lakeshore Plaza Tenants Include:

Lucky's	Blockbuster
Ross	Wells Fargo
Big 5	Lakeshore Nails
Fed Ex	GNC
Radio Shack	US Post Office
Payless Shoes	Visionarium
The UPS Store	New Image Salon
Toyo Sushi	Super Cuts
Jenny Craig	Pizza Hut
AT&T Wireless	Noah's Bagels
Nubi Yogurt	Lakeshore Cleaners
King of Noodles	Tully's
Game Stop	Quiznos
Ono Hawaiian BBQ	Chipotle
Petco	

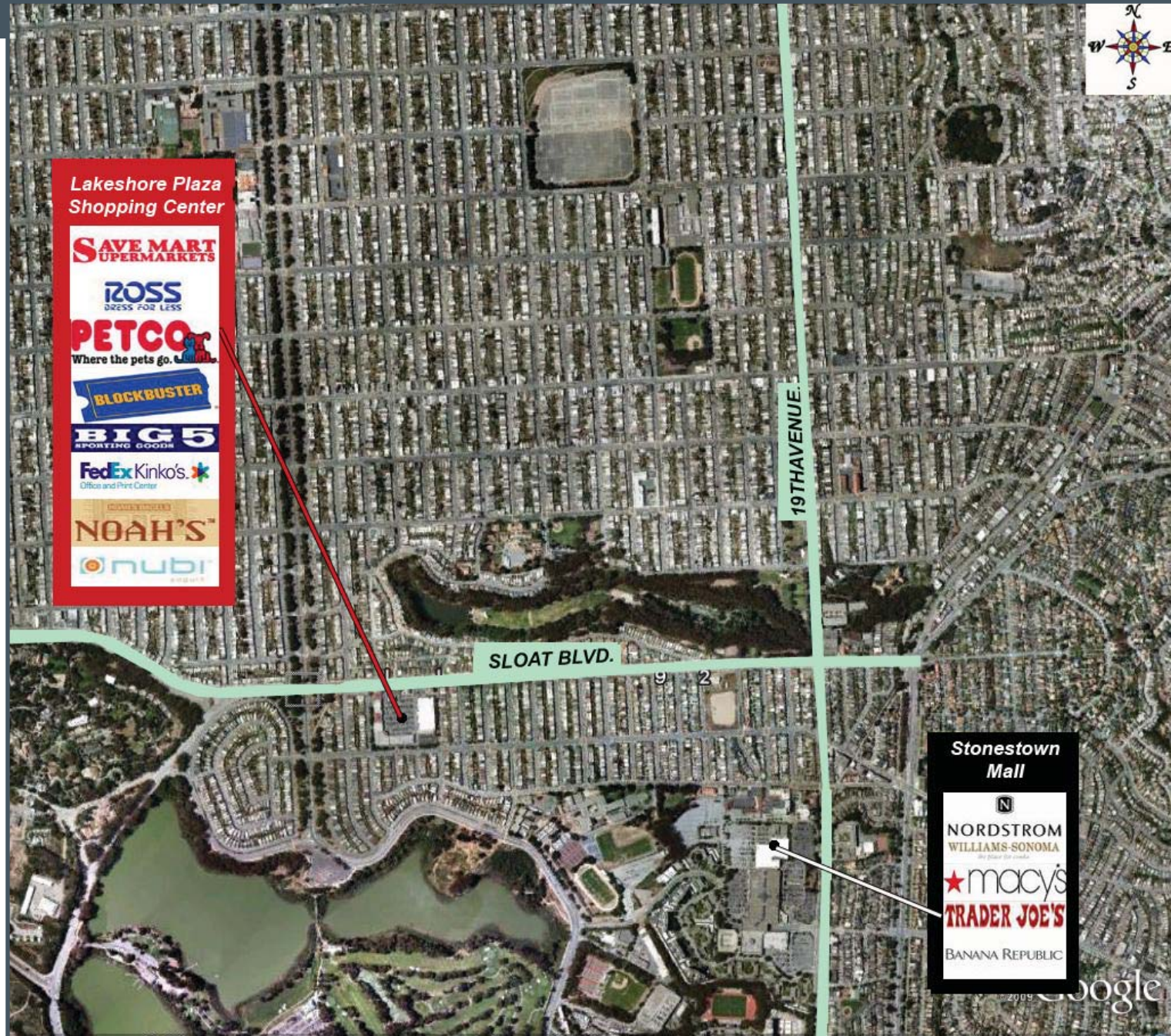
### For information, contact:

**Courtney Jones**, CA DRE #01232209  
[cjones@crosspointrealty.com](mailto:cjones@crosspointrealty.com)

**Carter Hemming**, CA DRE #01123464  
[chemming@crosspointrealty.com](mailto:chemming@crosspointrealty.com)

Phone: 415.288.6888  
Fax: 415.288.6877

Crosspoint Realty Services, Inc.  
260 California Street, 4th Floor  
San Francisco, CA 94111  
[www.crosspointrealty.com](http://www.crosspointrealty.com)



# Lakeshore Plaza

1501-1597 Sloat Blvd | San Francisco, California

## MAP & INFORMATION

### Description:

One of the only shopping centers on the west side of the City, Lakeshore Plaza enjoys an ideal location surrounded by residential communities. Abundant parking and a diverse tenant mix provide a unique shopping opportunity for this densely populated San Francisco neighborhood.

### Location:

1501-1597 Sloat Blvd.,  
San Francisco, CA 94132  
In San Francisco's Sunset District on Sloat Boulevard between Everglade Drive and Clearfield Drive.

### For information, contact:

**Courtney Jones**, CA DRE #01232209  
[cjones@crosspointrealty.com](mailto:cjones@crosspointrealty.com)

**Carter Hemming**, CA DRE #01123464  
[chemming@crosspointrealty.com](mailto:chemming@crosspointrealty.com)

Phone: 415.288.6888

Fax: 415.288.6877

Crosspoint Realty Services, Inc.  
260 California Street, 4th Floor  
San Francisco, CA 94111  
[www.crosspointrealty.com](http://www.crosspointrealty.com)

