



# Ham Lane & West Lockeford St. Lodi, California

## NOW LEASING

<u>SPACE#</u>	<u>SF</u>	<u>RENT</u>	<u>NNN</u>
210 N. Ham Ln.	1,717	Call	\$.45
224 N. Ham Ln. Suite 102	1,817	Call	\$.54



### For information, contact:

**Emily Murtha**, CA BRE #01891284  
[emurtha@crosspointrealty.com](mailto:emurtha@crosspointrealty.com)

**Carter Hemming**, CA BRE #01123464  
[chemming@crosspointrealty.com](mailto:chemming@crosspointrealty.com)

Phone: 415-288-6888  
Fax: 415-288-6877

Crosspoint Realty Services, Inc.  
303 Sacramento Street, 3<sup>rd</sup> Floor  
San Francisco, CA 94111  
[www.crosspointrealty.com](http://www.crosspointrealty.com)



## SITE PLAN

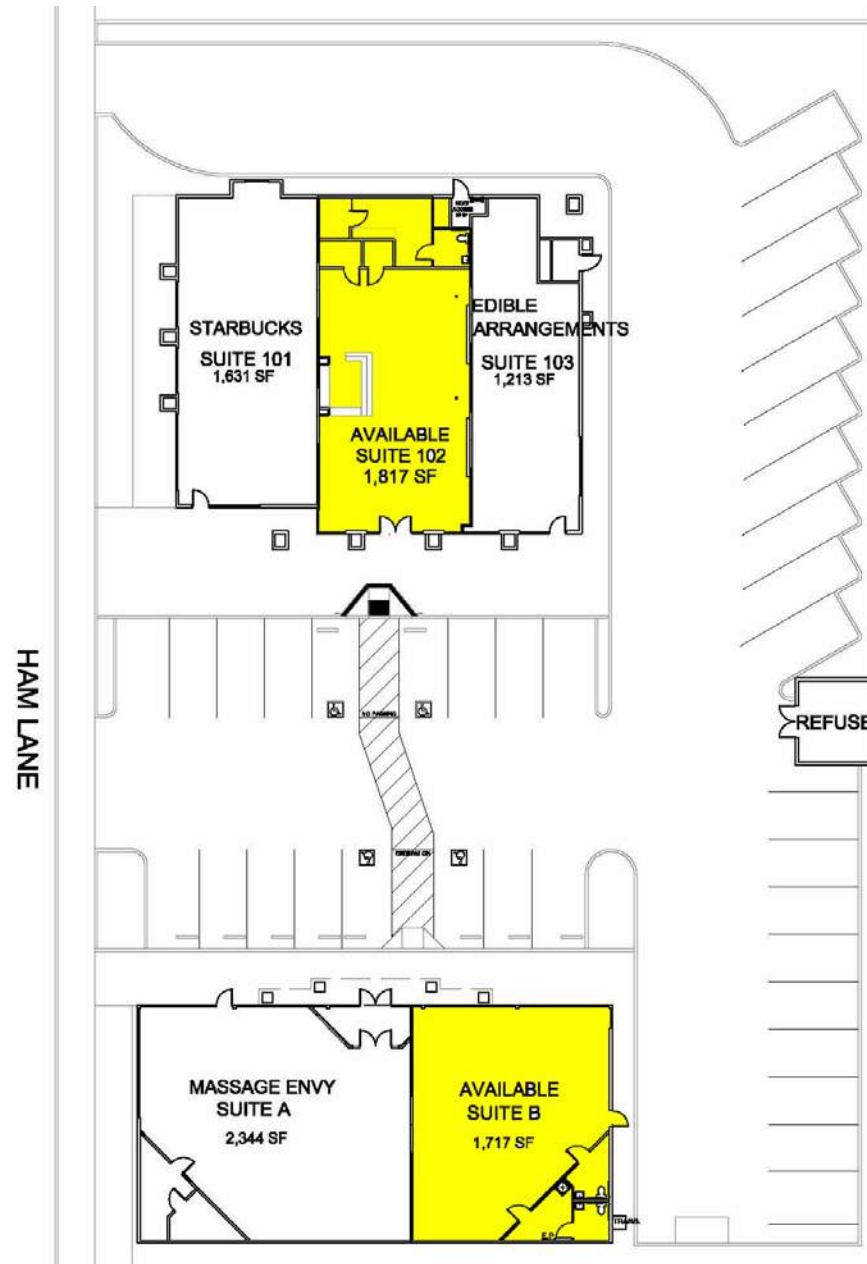
**For information, contact:**

**Emily Murtha**, CA BRE #01891284  
[emurtha@crosspointrealty.com](mailto:emurtha@crosspointrealty.com)

**Carter Hemming**, CA BRE #01123464  
[chemming@crosspointrealty.com](mailto:chemming@crosspointrealty.com)

Phone: 415-288-6888  
Fax: 415-288-6877

Crosspoint Realty Services, Inc.  
303 Sacramento Street, 3<sup>rd</sup> Floor  
San Francisco, CA 94111  
[www.crosspointrealty.com](http://www.crosspointrealty.com)



# Ham Lane & West Lockeford St. Lodi, California

## MARKET AREA

Tenants Include:

- Starbucks
- Edible Arrangements
- Massage Envy
- Lakewood Meats & Sausage
- Lakewood Nails
- Boost Mobile
- Ginger Bugs
- Little Caesars Pizza

For information, contact:

**Emily Murtha**, CA BRE #01891284  
[emurtha@crosspointrealty.com](mailto:emurtha@crosspointrealty.com)

**Carter Hemming**, CA BRE #01123464  
[chemming@crosspointrealty.com](mailto:chemming@crosspointrealty.com)

Phone: 415-288-6888  
Fax: 415-288-6877

Crosspoint Realty Services, Inc.  
303 Sacramento Street, 3<sup>rd</sup> Floor  
San Francisco, CA 94111  
[www.crosspointrealty.com](http://www.crosspointrealty.com)



# Ham Lane & West Lockeford St.

## Lodi, California

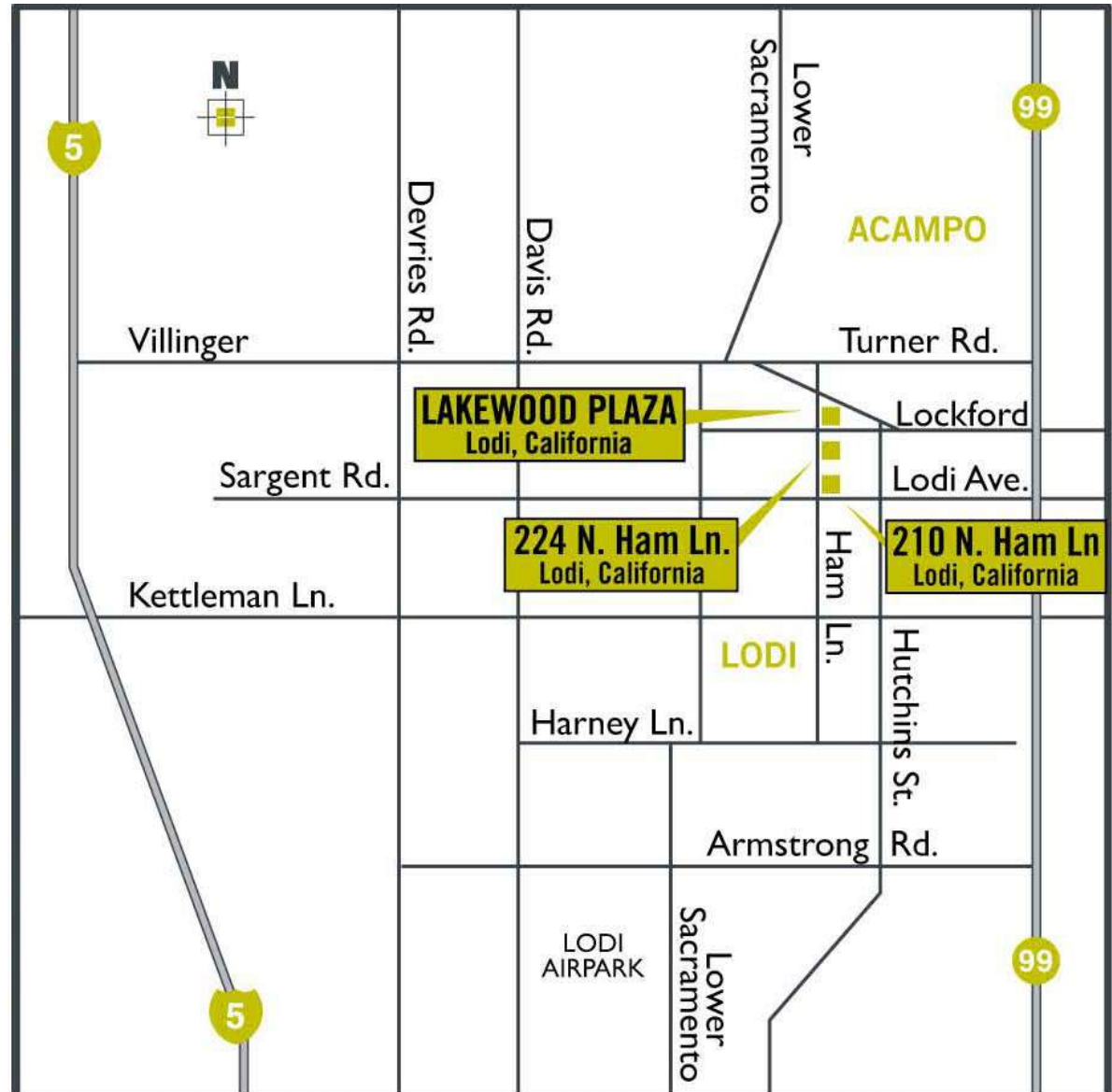
### MAP & INFORMATION

**Description:**

Two strip retail buildings and one pad building with great exposure to Ham Lane and convenient parking. Adjacent to Lakewood Mall. Surrounded by high-income neighbors

**Location:**

North Ham Lane & West Lockeford Street



**For information, contact:**

**Emily Murtha**, CA BRE #01891284  
[emurtha@crosspointrealty.com](mailto:emurtha@crosspointrealty.com)

**Carter Hemming**, CA BRE #01123464  
[chemming@crosspointrealty.com](mailto:chemming@crosspointrealty.com)

Phone: 415-288-6888  
Fax: 415-288-6877

Crosspoint Realty Services, Inc.  
303 Sacramento Street, 3<sup>rd</sup> Floor  
San Francisco, CA 94111  
[www.crosspointrealty.com](http://www.crosspointrealty.com)