



# Lakeshore Plaza

1501 – 1597 Sloat Blvd | San Francisco, California

## NOW LEASING

<u>SPACE#</u>	<u>SF</u>	<u>RENT</u>	<u>NNN</u>
1569-305	671	Call	\$12.00
1541	845	Call	\$12.00
1501 B (Avail 8/1/17)	1,192	Call	\$12.00
1563	2,520	Call	\$12.00

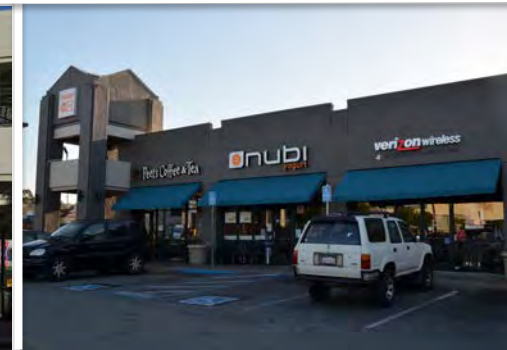
For information, contact:

**Courtney Jones**, CA BRE #01232209  
[cjones@crosspointrealty.com](mailto:cjones@crosspointrealty.com)

**Carter Hemming**, CA BRE #01123464  
[chemming@crosspointrealty.com](mailto:chemming@crosspointrealty.com)

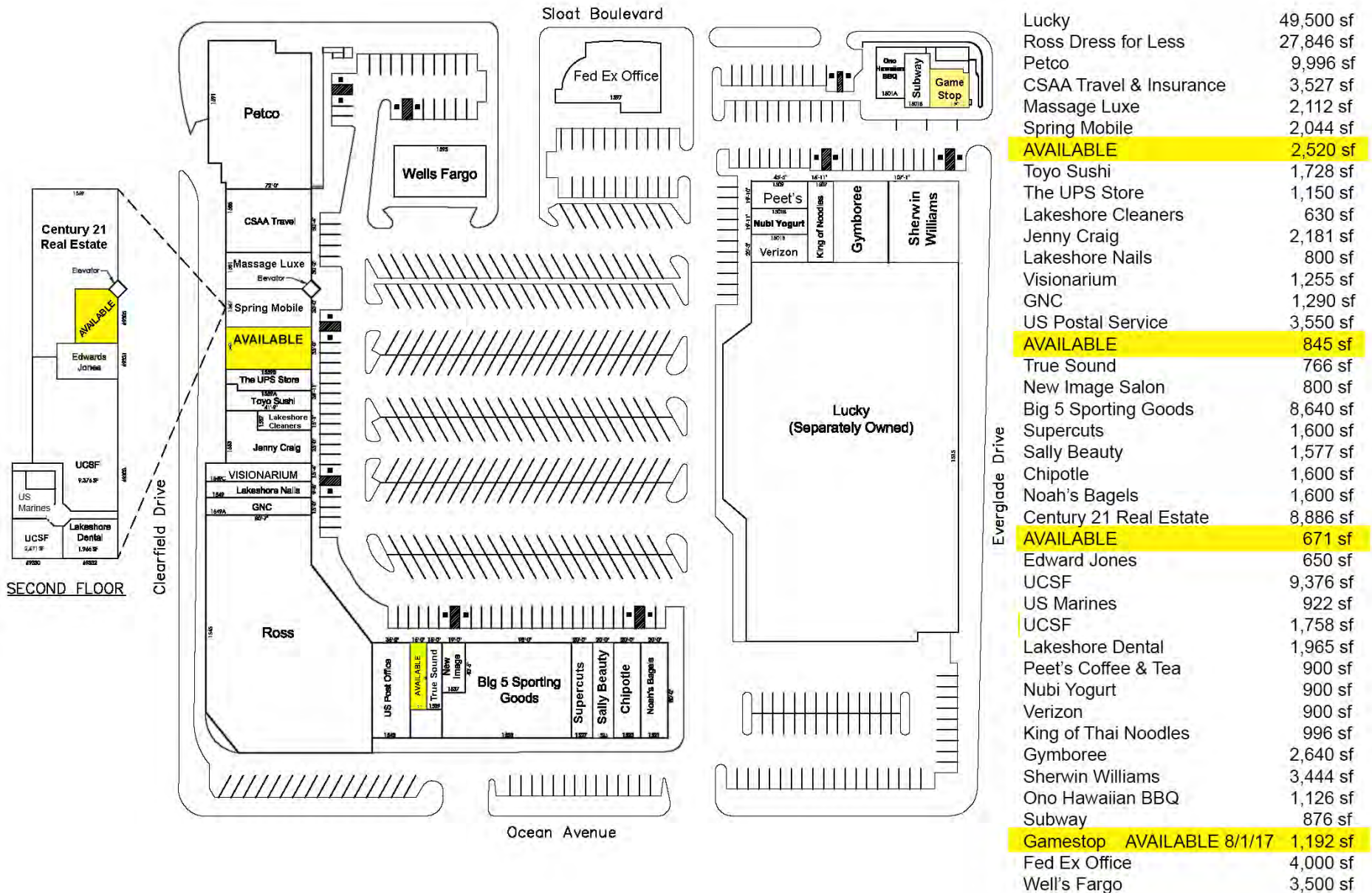
Phone: 415-288-6888  
Fax: 415-288-6877

Crosspoint Realty Services, Inc.  
303 Sacramento Street, 3<sup>rd</sup> Floor  
San Francisco, CA 94111  
[www.crosspointrealty.com](http://www.crosspointrealty.com)



## SITE PLAN

Contact: Courtney Jones (CA BRE#01232209), [cjones@crosspointrealty.com](mailto:cjones@crosspointrealty.com); Carter Hemming (CA BRE#01123464), [chemming@crosspointrealty.com](mailto:chemming@crosspointrealty.com); Phone 415.288.6888



# Lakeshore Plaza

1501 – 1597 Sloat Blvd | San Francisco, California

## MARKET AREA

### Lakeshore Plaza Tenants Include:

- |                     |                    |
|---------------------|--------------------|
| Lucky's             | Wells Fargo        |
| Ross                | Lakeshore Nails    |
| Big 5               | GNC                |
| Fed Ex              | US Post Office     |
| The UPS Store       | Visionarium        |
| Peet's Coffee & Tea | New Image Salon    |
| Toyo Sushi          | Supercuts          |
| Jenny Craig         | Sherwin Williams   |
| Subway              | Noah's Bagels      |
| Thai Noodle House   | Lakeshore Cleaners |
| Game Stop           | Chipotle           |
| Ono Hawaiian BBQ    | Sally Beauty       |
| Petco               | Gymboree           |
|                     | Verizon            |

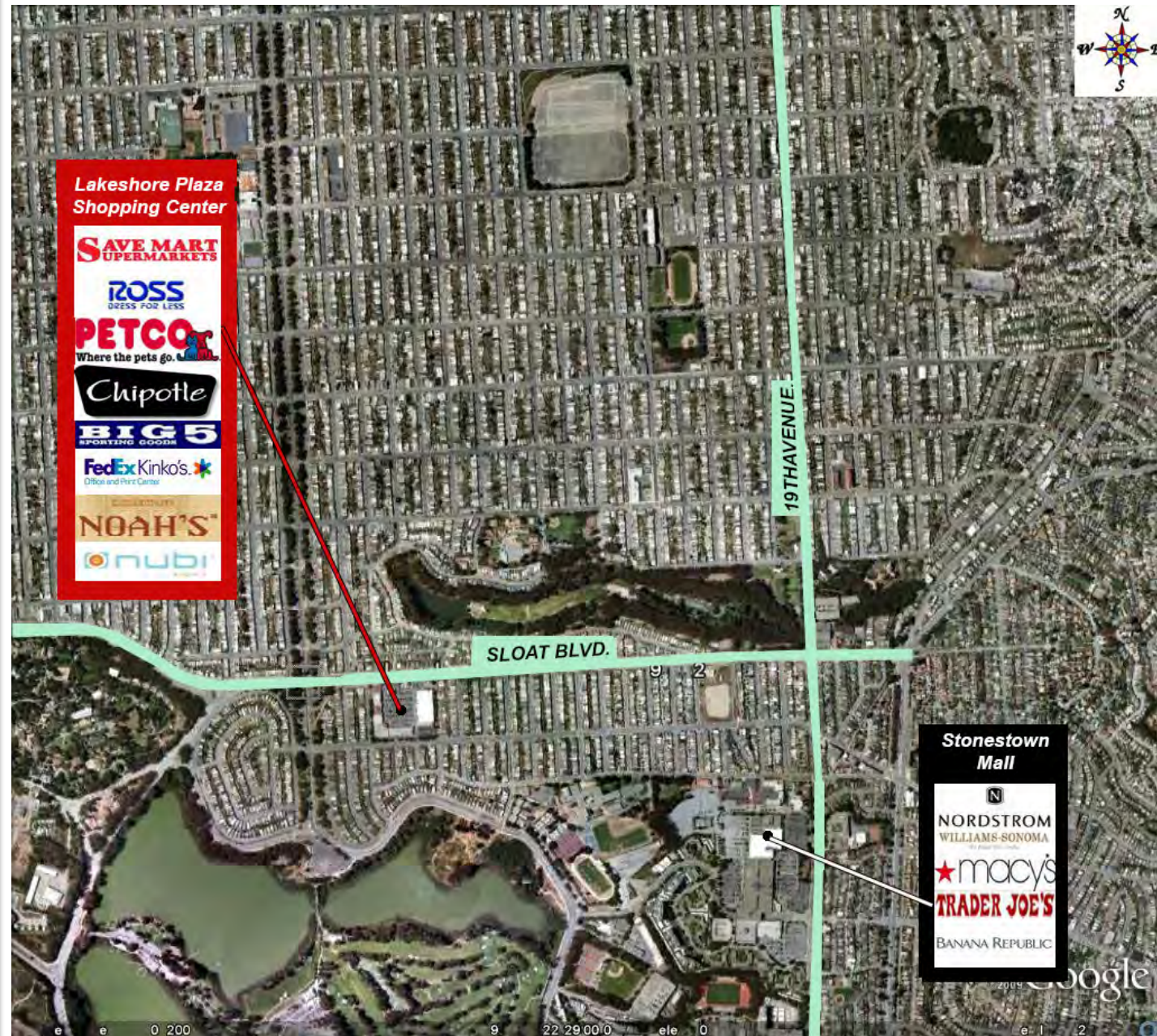
### For information, contact:

**Courtney Jones**, CA BRE #01232209  
[cjones@crosspointrealty.com](mailto:cjones@crosspointrealty.com)

**Carter Hemming**, CA BRE #01123464  
[chemming@crosspointrealty.com](mailto:chemming@crosspointrealty.com)

Phone: 415-288-6888  
Fax: 415-288-6877

Crosspoint Realty Services, Inc.  
303 Sacramento Street, 3<sup>rd</sup> Floor  
San Francisco, CA 94111  
[www.crosspointrealty.com](http://www.crosspointrealty.com)



# Lakeshore Plaza

1501 – 1597 Sloat Blvd | San Francisco, California

## MAP & INFORMATION

### Description:

One of the only shopping centers on the west side of the City, Lakeshore Plaza enjoys an ideal location surrounded by residential communities. Abundant parking and a diverse tenant mix provide a unique shopping opportunity for this densely populated San Francisco neighborhood.

### Location:

1501 – 1597 Sloat Blvd.,  
San Francisco, CA 94132  
In San Francisco's Sunset District on Sloat Boulevard between Everglade Drive and Clearfield Drive.

### For information, contact:

**Courtney Jones**, CA BRE #01232209  
[cjones@crosspointrealty.com](mailto:cjones@crosspointrealty.com)

**Carter Hemming**, CA BRE #01123464  
[chemming@crosspointrealty.com](mailto:chemming@crosspointrealty.com)

Phone: 415-288-6888  
Fax: 415-288-6877

Crosspoint Realty Services, Inc.  
303 Sacramento Street, 3<sup>rd</sup> Floor  
San Francisco, CA 94111  
[www.crosspointrealty.com](http://www.crosspointrealty.com)

