



Vintage Oaks Shopping Center

100 – 300 Vintage Way | Novato, California
620,000 sf Super Regional Open Air Center

NOW LEASING

<u>SPACE#</u>	<u>SF</u>	<u>RENT</u>	<u>NNN</u>
Pad W	8,590	Inquire	\$9.36

For information, contact:

Carter Hemming, CA BRE #01123464
chemming@crosspointrealty.com

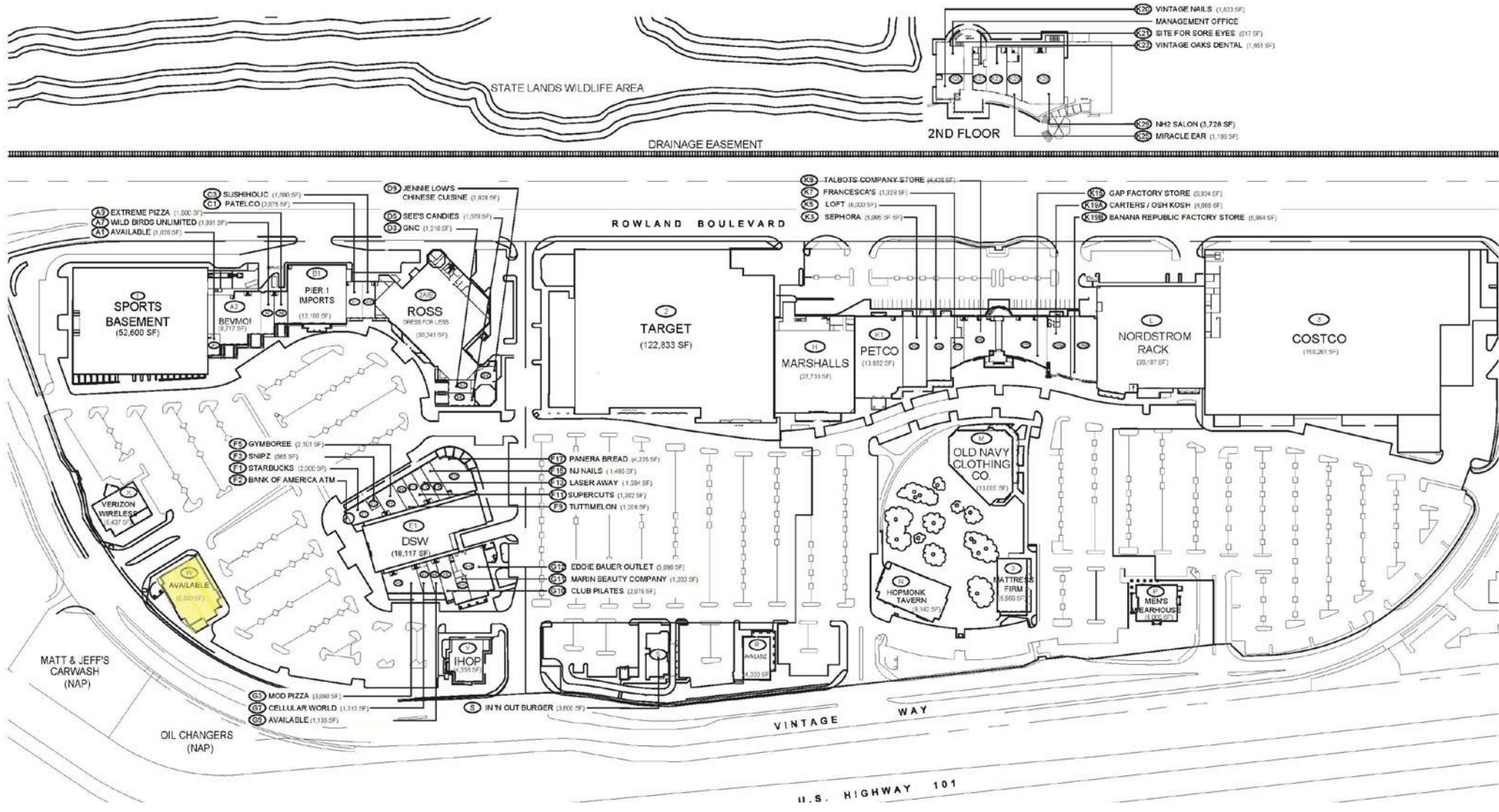
Kathy DeOchoa, CA BRE #01871554
kdeochoa@crosspointrealty.com

Phone: 415-288-6888
Fax: 415-288-6877
Crosspoint Realty Services, Inc.
303 Sacramento Street, 3rd floor
San Francisco, CA 94111
www.crosspointrealty.com



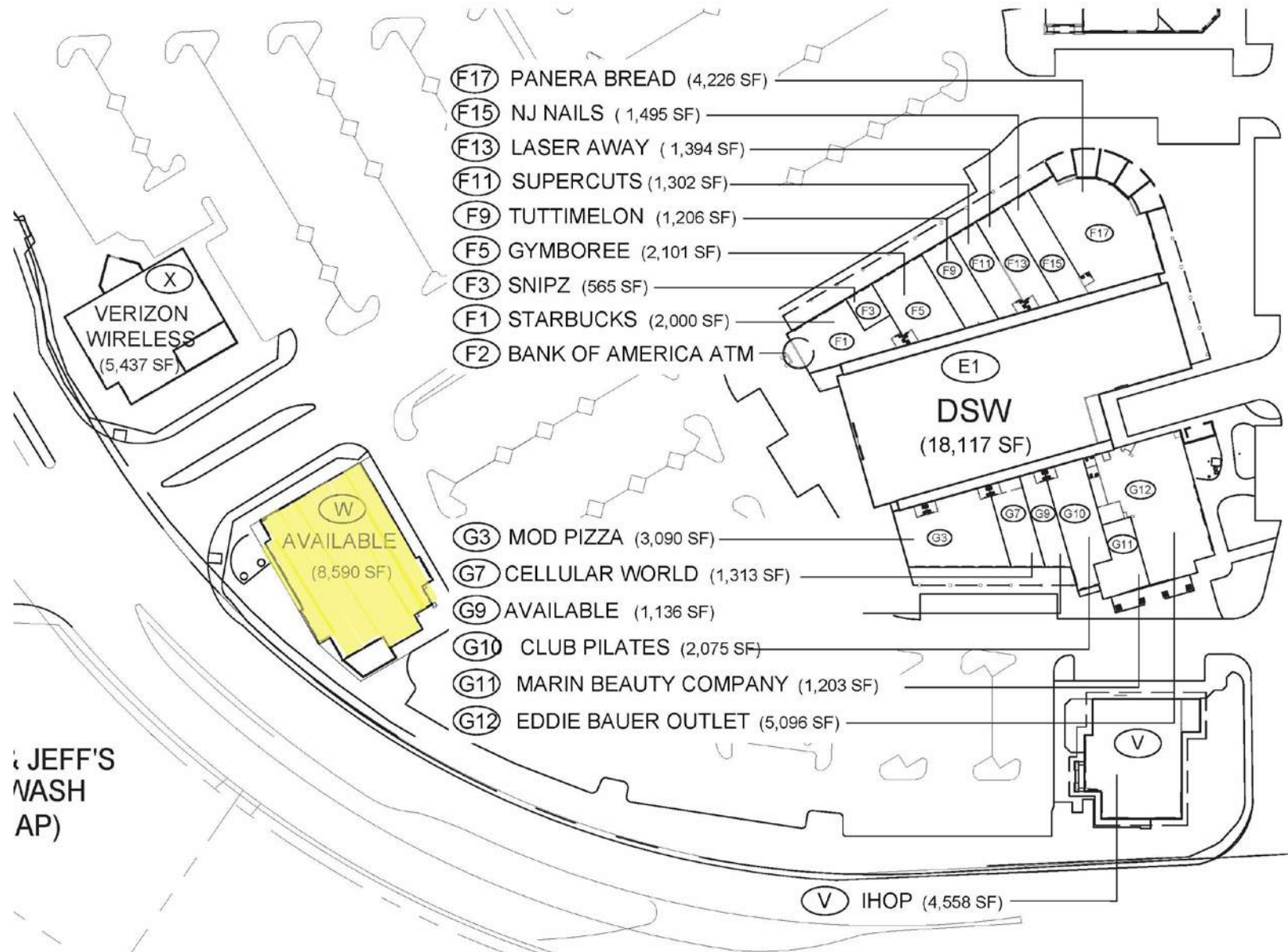
SITE PLAN

Contact: Carter Hemming - chemming@crosspointrealty.com ; Kathy DeOchoa - kdechoa@crosspointrealty.com



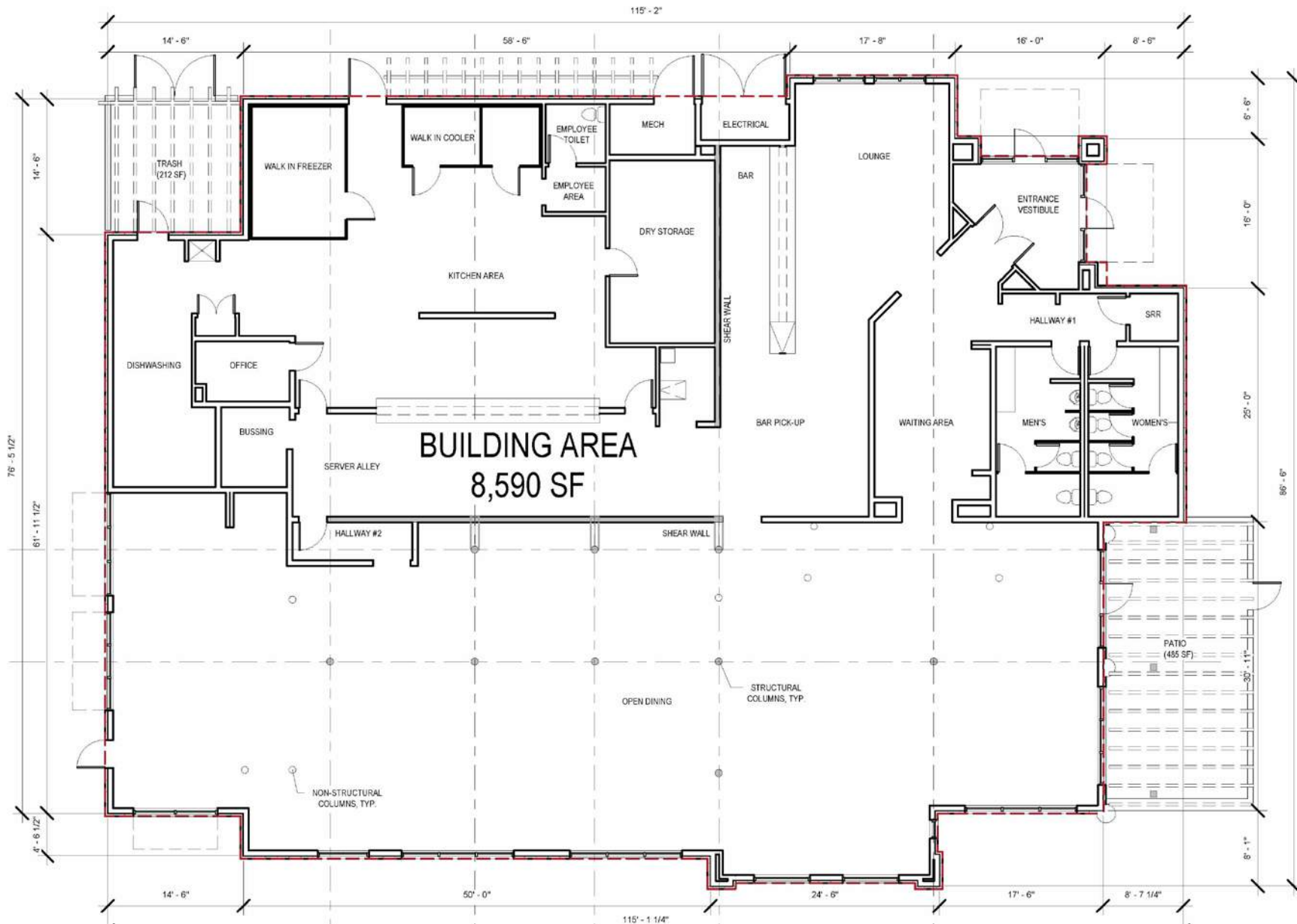
PARTIAL SITE PLAN

Contact: Carter Hemming - chemming@crosspointrealty.com ; Kathy DeOchoa - kdeochoa@crosspointrealty.com



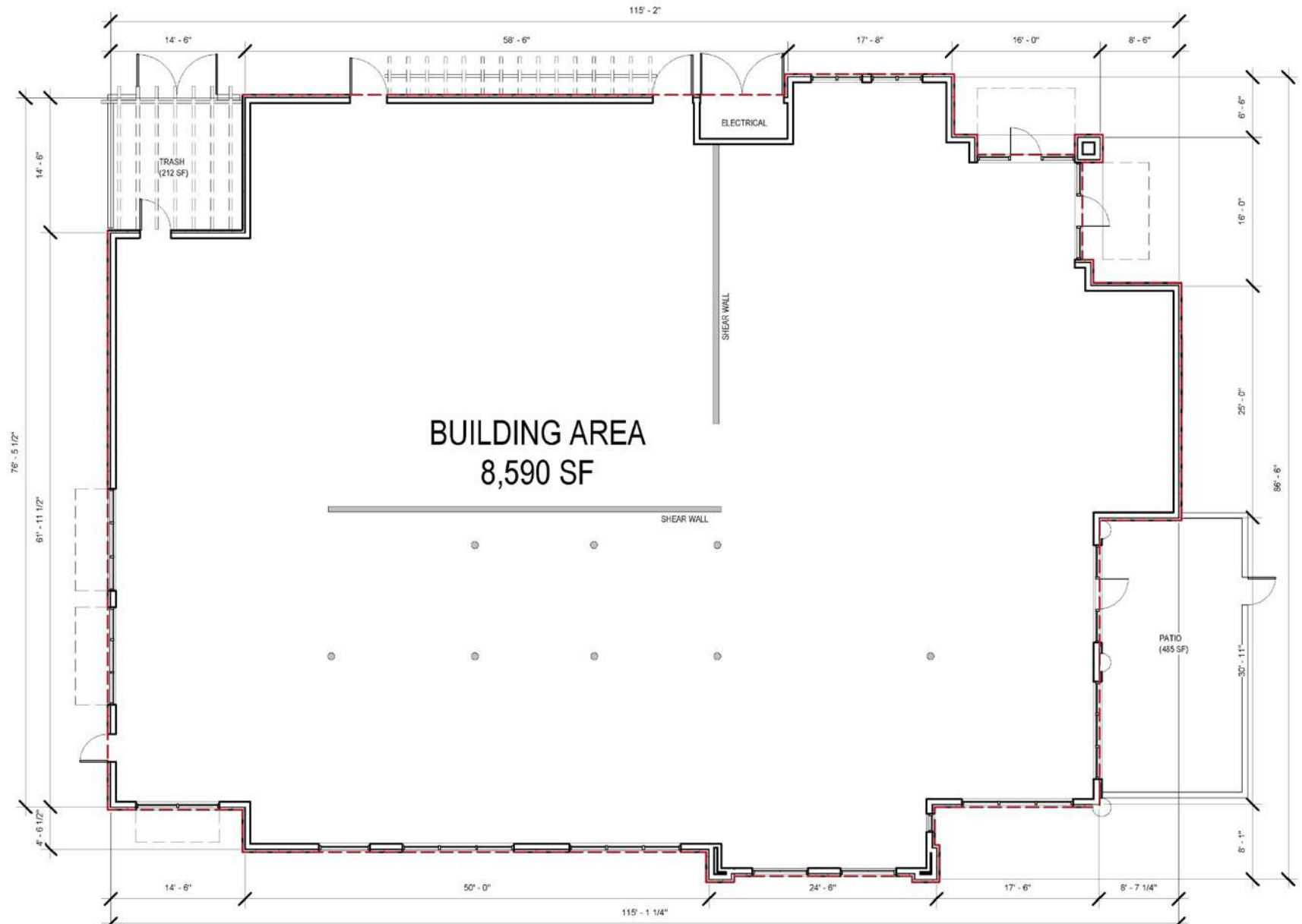
PAD W - LOD

Contact: Carter Hemming - chemming@crosspointrealty.com ; Kathy DeOchoa - kdechoa@crosspointrealty.com



PAD W - LOD

Contact: Carter Hemming - chemming@crosspointrealty.com ; Kathy DeOchoa - kdechoa@crosspointrealty.com





Vintage Oaks Shopping Center

100 – 300 Vintage Way | Novato, California

MARKET AREA

Vintage Oaks Shopping Center Tenants Include:

- | | | |
|-------------------|------------------|---------------------|
| Banana Republic | Gymboree | Ross Dress for Less |
| Factory Store | In 'n Out Burger | See's Candies |
| BevMo | LOFT | Sephora |
| Club Pilates | Marshalls | Sports Basement |
| Costco | Men's Wearhouse | Sprint |
| DSW | MOD Pizza | Starbucks |
| Extreme Pizza | Nordstrom Rack | Supercuts |
| Francesca's | Old Navy | Target |
| GAP Factory Store | Osh-Kosh/Carters | Verizon |
| GNC | Panera Bread | |
| | Petco | |
| | Pier 1 Imports | |

For information, contact:

Carter Hemming, CA BRE #01123464
chemming@crosspointrealty.com

Kathy DeOchoa, CA BRE #01871554
kdeochoa@crosspointrealty.com

Phone: 415-288-6888

Fax: 415-288-6877

Crosspoint Realty Services, Inc.
303 Sacramento Street, 3rd floor
San Francisco, CA 94111

www.crosspointrealty.com

